



Prévenir les désordres,
améliorer la qualité
de la construction

PÔLE PRÉVENTION
CONSTRUCTION

MÉMO CHANTIER®

FONDATEMENTS ET INFRASTRUCTURES

PRINCIPES PARASISMIQUES EN MAISON INDIVIDUELLE

FIXATIONS

ARMATURES

CONCEPTION

ÉTUDE DE SOL

ENCADREMENTS

LIAISONS /
ASSEMBLAGES

EXÉCUTION

RECOUVREMENT



MINISTÈRE
DE LA TRANSITION
ÉCOLOGIQUE
ET SOLIDAIRE

*Liberté
Égalité
Fraternité*



Consulter
www.georisques.gouv.fr

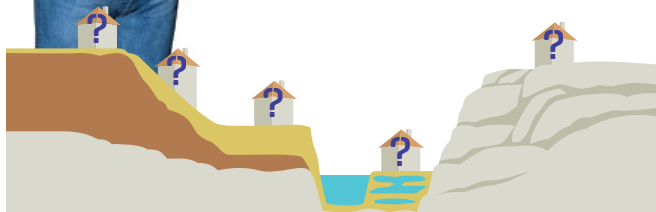


**IMPLANTATION
EN ZONE
SISMIQUE ?**



OBLIGATOIRE
**RÈGLES
ANTILLES**
RÉGLEMENTATION

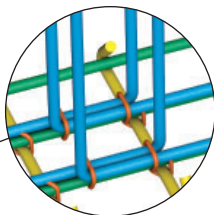
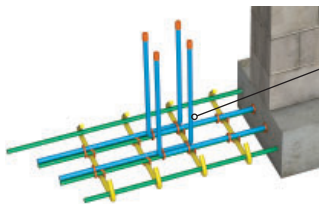
INDISPENSABLE
**ÉTUDE
DE SOL**



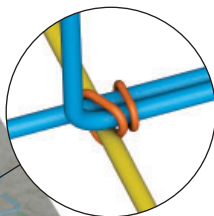
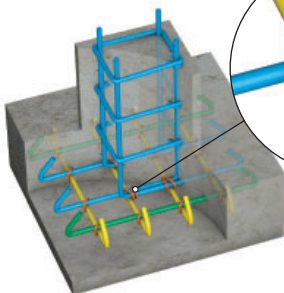
SOL MEUBLE ?

TOPOGRAPHIE ?

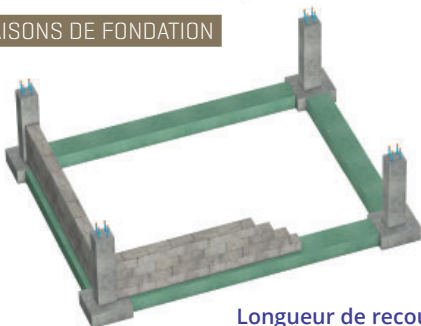
SEMELLE FILANTE



SEMELLE ISOLÉE



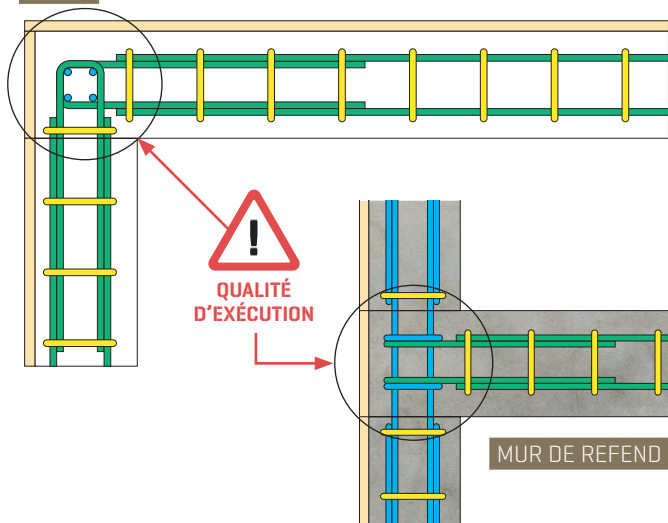
LIAISONS DE FONDATION



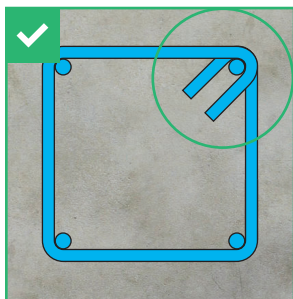
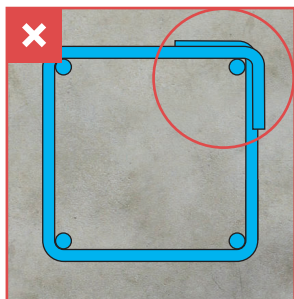
Longueur de recouvrement = $60 \varnothing$

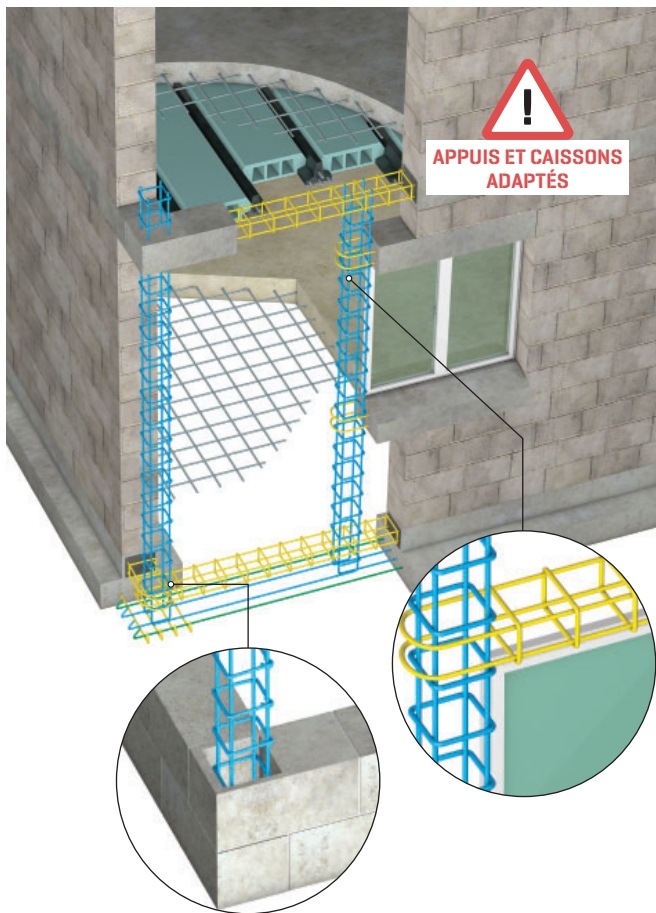
DÉTAILS D'EXÉCUTION - VUES EN PLAN

ANGLE

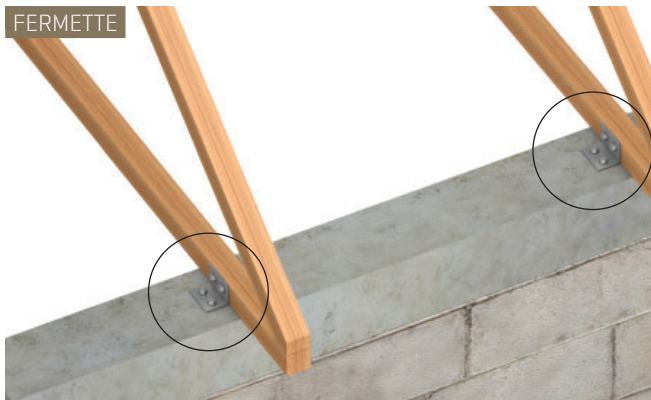


RAIDISSEURS HORIZONTAUX OU VERTICAUX

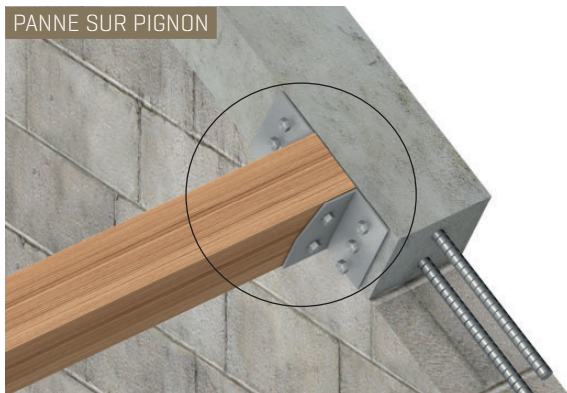


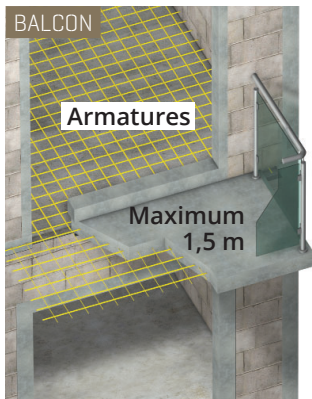


FERMETTE

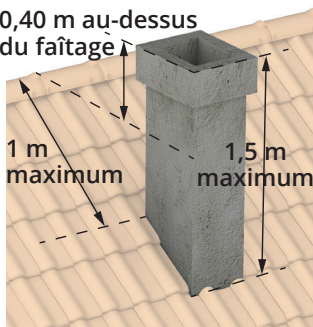


PANNE SUR PIGNON

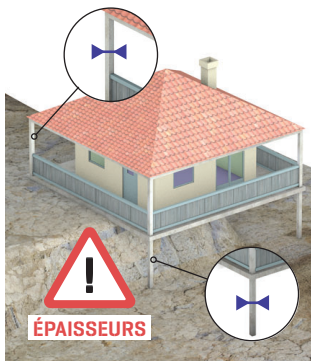


**CHEMINÉE***

0,40 m au-dessus
du faîtiage

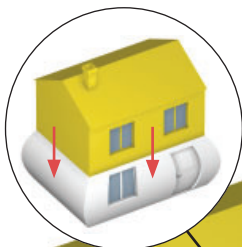
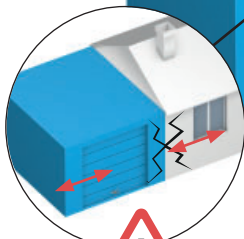
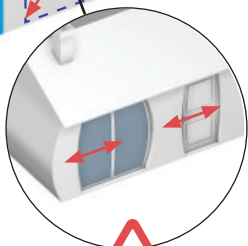


**au-delà de ces valeurs, nécessite un contreventement*

**POTEAUX**

**SÉISME**

Toutes les modifications touchant à la structure doivent être étudiées.

**ÉLÉVATION****EXTENSION****OUVERTURE
BAIE**